



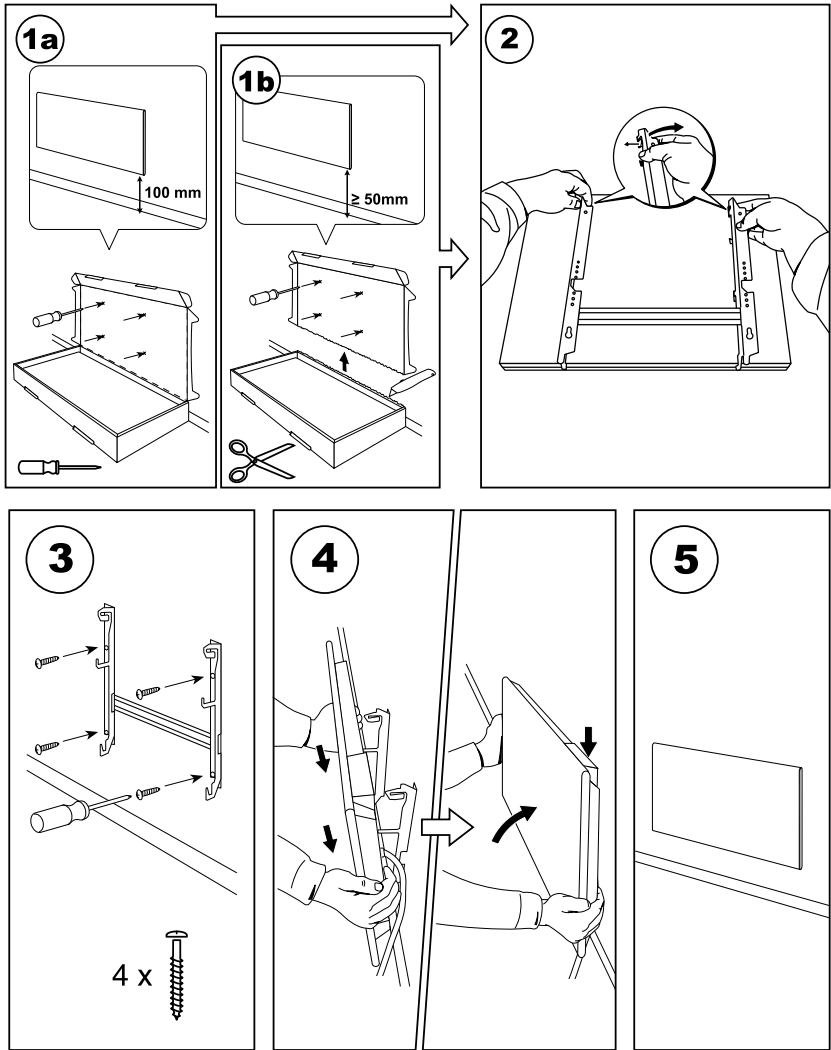
Quick Installation and Set-up Guide

Glamox H40 Wifi



We would like to congratulate you with your new Glamox H40 Wifi and are thankful for choosing us.

Quick Installation Guide





System requirements:

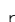

The router must be set up with 2,4 GHz and WPA2

Quick Installation Guide-Wifi Set Up



1. Download the "Glamox Heating WiFi" app and create user





2. To install the new heater push the  icon in the upper left corner. Push the  Heaters icon.



3. Push the  icon



4. Enter your Wifi SSID and password, then push and hold  and  on your heater.



5. Hold the buttons until "SC" gets visible in the display. Push "Search for heater" in the app.



6. Name your heater, ex. "livingroom". Select the heater from the list and push "Save".





GLAMOX *heating*